

Betacom Maestro

Real-time Visibility into Your Private Network

Betacom 5G as a Service (5GaaS)[™] is a full turnkey service that includes private wireless network design, installation, and ongoing security and operations monitoring and management. Our team of experts gets the service up and running with minimum disruption to your business, and the solution is flexibly designed to easily adjust and scale as more enterprise automation applications are added to the network. Our ISO-certified service is delivered from our in-house team, ensuring the highest level of quality. We stand behind our design and install with a performance guarantee, managed from our U.S.-based Security and Service Operations Center (SSOC).

In order to give you the peace of mind offered by real-time visibility into your private network performance, Betacom 5GaaS includes Betacom Maestro[™], a customer portal where you can monitor network performance against Key Performance Indicators (KPIs) (Figure 1), manage your private SIMS, and communicate with the Betacom SSOC. It is designed to scale for any enterprise, from a small warehouse or medium-sized manufacturing plant to a large airport operation.

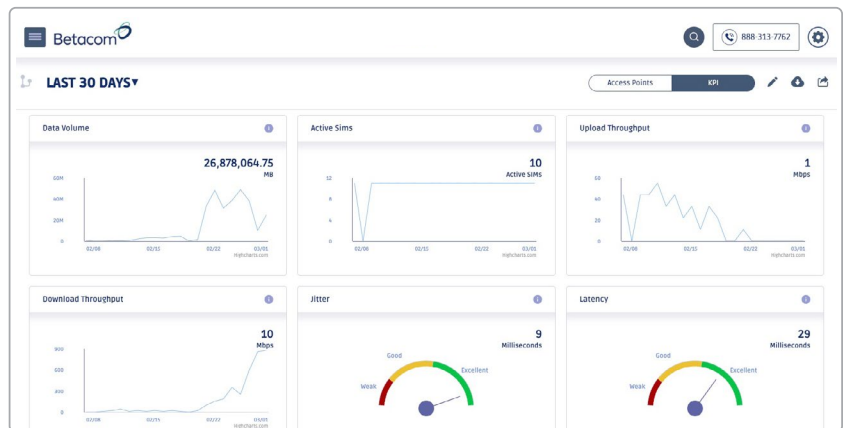


Figure 1: Betacom Maestro KPI Dashboard



Service Backed by Our Network Operations Center

Security is built into every element of our 5GaaS with a Zero Trust design principle. At its heart is our secure command and control center – what we call our Security and Service Operations Center (SSOC). It is equipped with cloud-based applications that use artificial intelligence and machine learning to proactively monitor the network and respond to threats in real time. Based on 4G/5G standards, using both SIMs and multifactor authentication, we ensure that only authorized devices and critical components are allowed onto your network. The control plane data we use to monitor and manage the network is encrypted end-to-end, adding additional security without impacting your network performance or bandwidth.

Key Maestro Features

- **KPI Dashboard:** Provides view of network performance metrics over a user-selected timeframe. KPI's include availability, download throughput, upload throughput, data volume, active SIMs, latency, and jitter. See below for detailed KPI descriptions.
- **Access Point View:** View network performance by Access Points (AP), which can be organized into groups or viewed individually.
- **SIM Management:** The solution was designed to manage 100's or 1000's of private network SIMs. Each SIM can be given a name, device model, and description. SIMs can be set in unlock, lock, and deactivated status. SIMs can be organized into groups, with extensive filtering tools and bulk editing capabilities for ease of SIM management (Figure 2).

| IMSI | Name | Device Model | Status | Last Session | Device Group |
|-----------------|---------------|--------------------|----------|---------------------|-------------------|
| 315010050003589 | TLTFLM025M020 | undefined | Unlocked | | unassigned |
| 315010050003588 | TLTFLM025M019 | Amn1 | Unlocked | 2023-01-11 21:53:25 | EUD Devices > EUD |
| 315010050003587 | TLTFLM025M018 | Amn1 | Unlocked | 2023-01-11 22:00:25 | EUD Devices > EUD |
| 315010050003586 | TLTFLM025M017 | Amn1 | Locked | 2023-01-11 21:54:08 | EUD Devices > EUD |
| 315010050003585 | TLTFLM025M016 | Amn1 | Unlocked | | EUD Devices > EUD |
| 315010050003584 | TLTFLM025M015 | Amn1 | Unlocked | 2023-01-11 21:46:30 | EUD Devices > EUD |
| 315010050003583 | TLTFLM025M014 | undefined | Unlocked | | unassigned |
| 315010050003582 | TLTFLM025M013 | undefined | Unlocked | | unassigned |
| 315010050003580 | TLTFLM025M011 | Amn1 | Unlocked | 2023-01-11 21:54:41 | EUD Devices > EUD |
| 315010050003580 | TLTFLM025M011 | Samsung K20wrt Pre | Unlocked | | EUD Devices > EUD |
| 315010050003589 | TLTFLM025M010 | undefined | Unlocked | | unassigned |
| 315010050003588 | TLTFLM025M009 | undefined | Unlocked | | unassigned |
| 315010050003587 | TLTFLM025M008 | undefined | Unlocked | | unassigned |
| 315010050003586 | TLTFLM025M007 | undefined | Unlocked | | unassigned |
| 315010050003585 | TLTFLM025M006 | Amn1 | Unlocked | 2023-01-11 21:54:49 | EUD Devices > EUD |
| 315010050003584 | TLTFLM025M005 | Amn1 | Unlocked | | EUD Devices > EUD |

Figure 2: SIM Management Tools for Viewing, Organizing and Managing Thousands of SIMs

KPI Descriptions

1. **Download Throughput** – the average download usage throughput in Mbps, measured by the total volume of data transmitted, during the time it was actively transmitted.
2. **Upload Throughput** – the average upload usage throughput in Mbps, measured by the total volume of data transmitted, during the time it was actively transmitted.
3. **Data Volume** – the total data transferred in MB, both upload & download.
4. **Active SIMs** – represents the average number of SIMs attached to the network element being viewed: an AP, a group of APs, or the whole network.
5. **Latency** – a measure in milliseconds (ms) of the round-trip time between an AP and the core network.
6. **Jitter** – a measure in milliseconds (ms) of the variation in latency between an AP and the core network.
7. **Availability** – a measure of network uptime performance relative to the customer annual service level agreement (SLA). It measures the unscheduled downtime of APs caused by Betacom.

5GaaS empowers high-performing enterprises across industries



-  Airports
-  Healthcare
-  Manufacturing
-  Offices
-  Retail
-  Schools
-  Stadiums
-  Warehouses

In addition to the three key features covered above, Betacom Maestro provides these additional tools for viewing and managing Betacom 5GaaS:

- **Cases:** Open, view and manage Cases. You can open a new case, view a full case history, add comments, and add attachments at any time for up-to-date communications with the Betacom SSOC.
- **Knowledge Base:** Betacom Maestro includes a series of Knowledge Base articles about Betacom 5GaaS, KPIs, and a guide on how to use Betacom Maestro.
- **Users:** You can manage users, providing them Admin or General access to Betacom Maestro. There is no limit to the number of users that can be given access.
- **Global Search:** Search throughout the Betacom Maestro site to find anything: AP, SIM, case, user, or KB article (Figure 3).

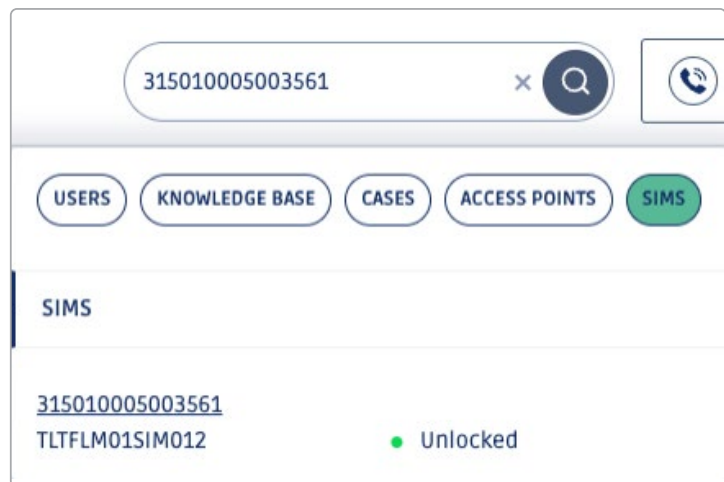


Figure 3: Global Search allows you to find anything on Betacom Maestro

Betacom Maestro delivers something no other private wireless network provides – full onsite visibility, access, and support for your high performance 5GaaS network.

Contact us to learn more:
www.betacom.com/contact-us

